

Cambridge Advanced Learner's Dictionary

For DEPReader

User Guide

Table of Contents

1	OVERVIEW	3
1.1	About the CALD2 dictionary.....	3
1.2	Copyright.....	3
1.2.1	<i>Viewing the copyright information of CALD2 on the PDA.....</i>	4
1.3	Special dictionary features	5
1.3.1	<i>Dictionary entries.....</i>	5
1.3.2	<i>Frequency Information system.....</i>	6
1.3.3	<i>Common Learner Error fields.....</i>	8
1.3.4	<i>Most common collocations.....</i>	8
1.3.5	<i>Notes on the usage.....</i>	9
1.3.6	<i>Word references.....</i>	9
1.4	How to use this dictionary	10
1.4.1	<i>DEPReader.....</i>	10
1.4.2	<i>Bible With You.....</i>	11
1.4.3	<i>rheaDER.....</i>	11
2	PURCHASE THIS DICTIONARY	13
3	REGISTRATION.....	13
3.1	Licenses.....	13
3.2	Product Registration	13
4	CONTACT AND SUPPORT	16

1 Overview

1.1 *About the CALD2 dictionary*

This fully updated edition of the **Cambridge Advanced Learner's Dictionary** contains new features such as new, up-to-date vocabulary (e.g. sex-up, speed-dating, whiteboard), new 'mini-collocation' boxes, and new frequency information to highlight the most important words to learn.

The *Cambridge Advanced Learner's Dictionary* has been created from the database of the *Cambridge International Corpus (CIC)*, a collection of over 700 million words of real written and spoken English from a huge variety of resources for tracking both British and American English words. The CIC also includes the Cambridge Learner Corpus, a unique collection of over 50,000 exam papers from Cambridge ESOL. It shows real mistakes learners make and highlights the parts of English which cause problems for learners.

Dictionary Features:

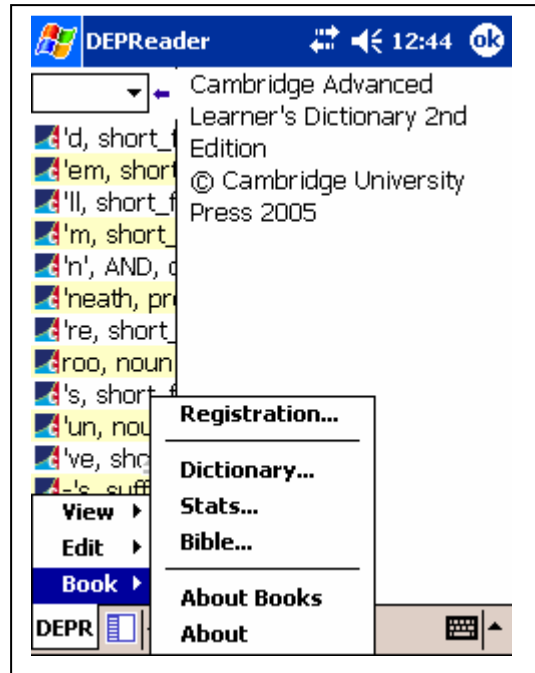
- 'Mini-collocation' boxes help learners use words in the most fluent and natural way.
- Frequency information showing you the most important words to learn.
- Hundreds of new words and phrases
- Usage notes based on the Cambridge Learner Corpus (real student mistakes from Cambridge ESOL exam papers) that help you to avoid common mistakes.
- Easy-to-understand definitions, and Guidewords to help you find the meaning you want – fast!
- Over 90,000 example sentences, helping you to speak and write natural English.
- The CALD2 is the ideal dictionary for upper intermediate to advanced level learners and for FCE, CAE, CPE, IELTS and TOEFL preparation.

1.2 *Copyright*

Cambridge Advanced Learner's Dictionary 2nd Edition
© Cambridge University Press 2005

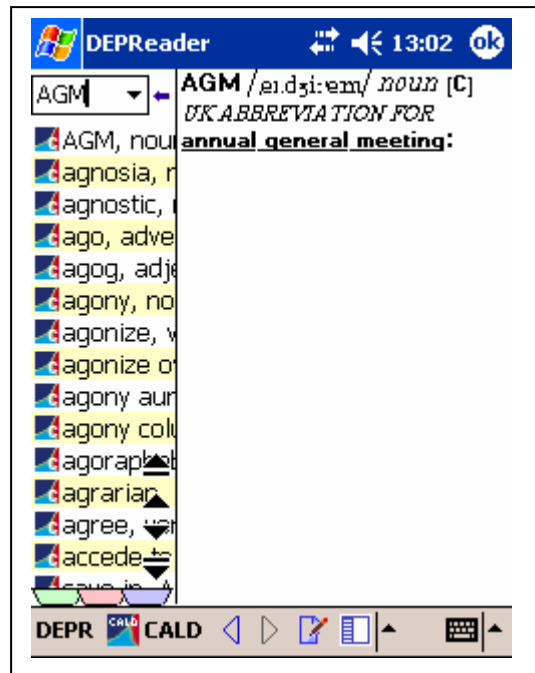
1.2.1 Viewing the copyright information of CALD2 on the PDA

1. Go to the **About Books** form:
 - Launch **DEPReader**
 - Tap on the **Headline** bar or the **Menu** button to display the form menu
 - Tap on **About Books**



Or

- In the dictionary, tap on the abbreviation of the dictionary, **CALD**, in the headline bar



2. View the **About** form of the *CALD2* dictionary:

- Tap on the *down arrow* button before **Copyright**
- Tap on **About CALD2**



1.3 Special dictionary features

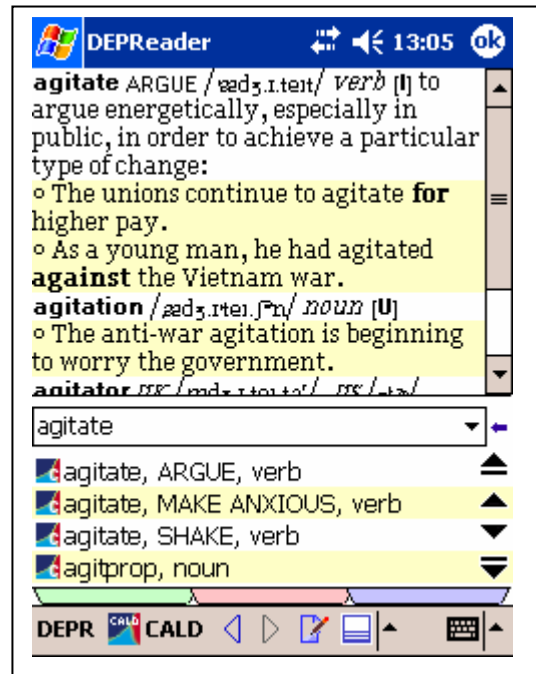
1.3.1 Dictionary entries

The dictionary entries contain the headword, the pronunciation, the different meanings and other information.

Example sentences are denoted by yellow background color.



GUIDEWORDS show you when a word has more than one main meaning. They stand immediately after the main entry and are denoted by capital letters.

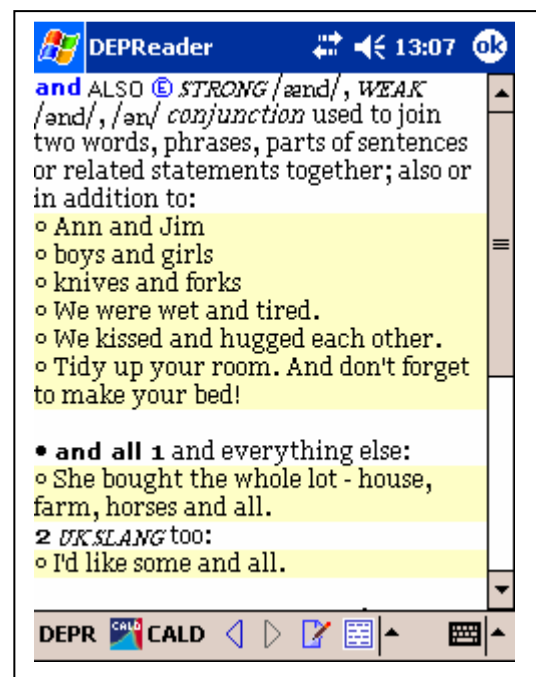



1.3.2 Frequency Information system

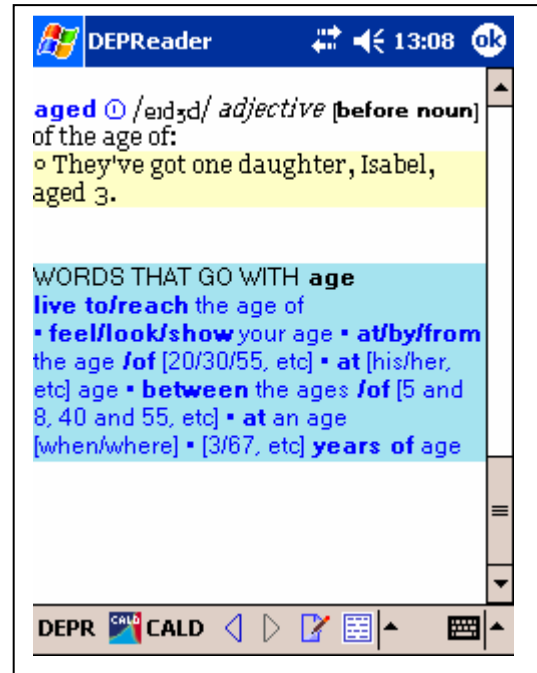
The Frequency Information system shows the relative importance not only of words but also of their meanings, and of individual phrases. All the high-frequency words have been extracted and then examples of them have been coded to work out the frequency of their different meanings. The frequency results have been adapted to the needs of the learners of English. The resulting system gives learners a clear guide to the most important words and meanings to learn:

Words labeled **E** are "essential" – you should know them and be able to use all of them. **I** marks "improver" words, and **A** marks "advanced" words that will make your English really fluent and natural.


Meanings marked **E** (Essential) are words which everyone needs to know in order to communicate effectively. They are either extremely common (usually over 400 occurrences per 10 million corpus words), or they express core concepts (e.g. asleep). There are about 4,900 of these meanings.



Meanings marked  (Improved) are also common in native speaker English (typically between 200-400 occurrences per 10m corpus words). Like Essential, this band can include less common words which express useful concepts. There are about 3,300 of these meanings.




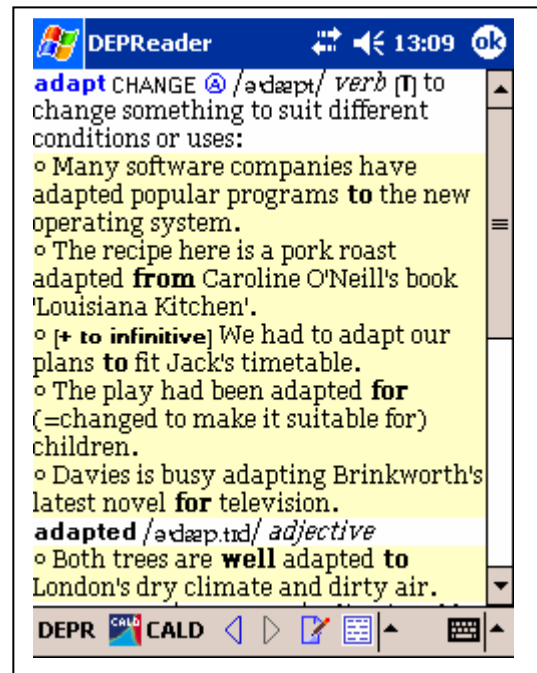
DEPRReader 13:08 ok

aged  /eɪdʒd/ *adjective* [before noun]
of the age of:
◦ They've got one daughter, Isabel, aged 3.


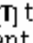
WORDS THAT GO WITH **age**
live to/reach the age of
• **feel/look/show** your age • **at/by/from** the age **of** [20/30/55, etc] • **at** [his/her, etc] age • **between** the ages **of** [5 and 8, 40 and 55, etc] • **at** an age [when/where] • [3/67, etc] **years of age**

DEPR CALD

Meanings marked  (Advanced) typically occur around 100-200 times per 10 million corpus words, which is still highly significant. Advanced learners should aim to be confident with these to make their English more fluent and natural. There are about 3,700 of these meanings.



DEPRReader 13:09 ok

adapt CHANGE  /əˈdæpt/ *verb*  to change something to suit different conditions or uses:
◦ Many software companies have adapted popular programs **to** the new operating system.
◦ The recipe here is a pork roast adapted **from** Caroline O'Neill's book 'Louisiana Kitchen'.
◦ [+ **to infinitive**] We had to adapt our plans **to** fit Jack's timetable.
◦ The play had been adapted **for** (=changed to make it suitable for) children.
◦ Davies is busy adapting Brinkworth's latest novel **for** television.
adapted /əˈdæptɪd/ *adjective*
◦ Both trees are **well adapted to** London's dry climate and dirty air.

DEPR CALD

1.3.3 Common Learner Error fields

The 'Common learner error' notes in the definitions show you mistakes which learners of English often make, and help you avoid them. These notes are based on the Cambridge Learner Corpus, a huge collection of real exam tests.

DEPRReader 13:10

air con'ditioning *noun* [U] the system used for keeping the air in a building or vehicle cool:
◦ I wish my car had air conditioning.

COMMON LEARNER ERROR
air conditioning
The correct form of the noun is 'air conditioning', not 'air condition'.
All rooms have television, phone and air conditioning.
~~*All rooms have television, phone and air condition.*~~

DEPR CALD CALD

1.3.4 Most common collocations

Hundreds of common words included in this dictionary have boxes denoted by blue background color and showing the most common collocations. They are entitled: "WORDS THAT GO WITH ...".

DEPRReader 13:08

aged *adjective* [before noun] of the age of:
◦ They've got one daughter, Isabel, aged 3.

WORDS THAT GO WITH age
live to/reach the age of
• **feel/look/show** your age • **at/by/from** the age **/of** [20/30/55, etc] • **at** [his/her, etc] age • **between** the ages **/of** [5 and 8, 40 and 55, etc] • **at** an age [when/where] • [3/67, etc] **years of age**

DEPR CALD CALD

1.3.5 Notes on the usage

Notes on the usage of the particular word may be included in the definitions.

DEPReader 13:11 ok

◦ It's so wonderful being able to see the sea from my window.
◦ See also ability

• **be better able to do something** to find it easier to do something:
◦ Get a good night's sleep and you'll feel better able to cope.

USAGE
able or can/could?
Able is used with modal and auxiliary verbs, where **can** or **could** are not grammatically possible.
I might not be able to attend the meeting.
I've never been able to understand him.

DEPR CALD CALD

1.3.6 Word references

Cross-references in the definitions help you learn more vocabulary connected with a word. They often refer to words with similar or contrasting meanings.

Cross-references are denoted by underlined font in the **See also** section of the definition.

In order to display the words from cross-references:

- Tap on an underlined word in the **See also** section

DEPReader 13:13 ok

able SKILFUL /eɪ.bəl/ *adjective* clever or good at what you do:
◦ an able child/student/secretary
◦ This problem is now being looked at by some of the ablest minds/scientists in the country.
◦ See also ability **ably** /eɪ.bli/ *adverb*
◦ He performs his duties very ably (=skilfully).

DEPR CALD CALD

1.4 How to use this dictionary

The **Cambridge Advanced Learner's Dictionary** comes with the distribution file as a database file (.pdb) file, which is not an application itself. In order to use it, you need to install a software application which supports it on your Palm PDA.

Use the **Cambridge Advanced Learner's Dictionary** with the following Palm PDA applications:

1.4.1 DEPReader

Dictionary and Encyclopedia Personal Reader (DEPReader) is a dictionary software program for PDAs, included as a bonus part in the distribution packages of multiple dictionary and reference databases. **DEPReader** is not a dictionary or encyclopedia itself, you need a database to run the application.

Supporting multiple dictionary databases in an exclusively compressed format, it allows you to carry your favorite dictionaries on PDA everywhere.

In addition to the standard lookup function, **DEPReader** supports other search modes - phonetic, wildcard, error tolerance - to help you find a word or compound even when you do not know the exact spelling. One-tap lookup in the dictionary definitions makes for the fast and handy data accessibility. Note that the special cross references embedded in the CALD2 are also accessible directly from the dictionary definitions, but are denoted by small capitals.

DEPReader may be personalized by customizing its layout, it allows the addition of personal user notes and bookmarks to the dictionary entries.

1. Get DEPReader

DEPReader comes as a bonus part of the distribution file of **CALD2 Dictionary** for Pocket PC PDA.

- Get **depr.prc** file from the product archive

Or

- Download it from:

http://www.reftogo.com/product.php?id=depr_ref_ppc

2. Using DEPReader

For instructions on how to use **DEPReader** application, please, refer to the **UserGuide(DEPR)** that is a part of the distribution package of **CALD2**

- Get the UserGuide(DEPR) from the product file

Or

- Download it from:

[http://www.reftogo.com/download/src/pdf/UserGuide\(DEPR\)_ppc.pdf](http://www.reftogo.com/download/src/pdf/UserGuide(DEPR)_ppc.pdf)

Note: Adobe Acrobat® Reader program is required.

3. Copyright

Dictionary and Encyclopedia Personal Reader (DEPReader)

This product and the algorithms used are property of GMPSOft. All rights reserved 2004-2008.

1.4.2 Bible With You

BibleWithYou.com (<http://www.biblewithyou.com>) is the homepage of **Bible With You** PDA application for visualizing the text of the Bible. **Bible With You** provides instant Dictionary lookup of words in the Bible text via pop-up function, which does not interrupt the reading process. No switch between applications needed, provides recognition of inflected forms.

1. Get Bible With You

- Go to www.biblewithyou.com
- Go to **Products** page
- Choose **Bible With You** for a particular Bible translation

2. Using Bible With You

For instructions on how to use **Bible With You** application, please, refer to its **User Guide** included in the distribution package.

Note: Adobe Acrobat® Reader program is required.

3. Copyright

Bible With You

This product and the algorithms used are property of GMPSOft. All rights reserved 2002-2008.

1.4.3 rheaDER

rheaDER is GMPSOft's ebook reader for PDA. **rheaDER** allows you to read ebooks, add notes and bookmark specific passages, view the footnotes, the tables and the images available in some books. The integration with *Bible With You* and GMPSOft's dictionaries make it possible to look-up Bible references and the definition of words the books while reading the text via pop-up function.

1. Get rheaDER

rheaDER application is included in each ebook download on GMPSOft's website:

- Go to www.gmpsoft.com
- Go to **Products** page
- Choose **Palm Ebooks** section
- Download the ebook

2. **Using rheaDER**

For instructions on how to use **rheaDER** application, please, refer to its **User Guide** included in the distribution package.

Note: Adobe Acrobat[®] Reader program is required.

3. **Copyright**

rheaDER

This product and the algorithms used are property of GMPSOft. All rights reserved 2005-2008.

2 Purchase this dictionary

Purchase this product from **Reference ToGo** (<http://www.refwego.com>)

Reference ToGo features the authoritative and trusted English dictionaries and reference books of the *Oxford University Press*, the *Cambridge University Press* and *Random House* publishers. It presents best-selling English language dictionaries such as the **Pocket Oxford English Dictionary** and the **Concise Oxford English Dictionary**.

- Go to **Products** page
- Find the product you desire
- Click on **BUY** and follow the instructions

3 Registration

3.1 Licenses

To use this product, you need a user license for the dictionary database:

- 1. Trial License** – Includes all the functionality of the **Standard License** access to a limited number of the words plus indication that the product needs to be registered.
- 2. Standard License** – Indicates that you have successfully licensed the dictionary database.

3.2 Product Registration

Register the product without manual unlock code input. Just install your **PADUnlock** file (**PA**lm **D**atabase **U**nlock **S**ystem) on your Pocket PC device.

PADUnlock is a database file (.pdb type), containing your registration information for each one of the products you have purchased. You receive your **PADUnlock** file after you order a License for a GMPSOft product and register it in our system database.

1. Get your **PADUnlock**:

- Follow the PADUnlock link in the GMPSOft Sales Confirmation email you have received after the purchase.
- Follow the steps
- Click on **GET IT** link in your **Product Info** page.
- Save the file in the folder on your PC where you expanded the product .ZIP archive (say c:/GMPSOft)

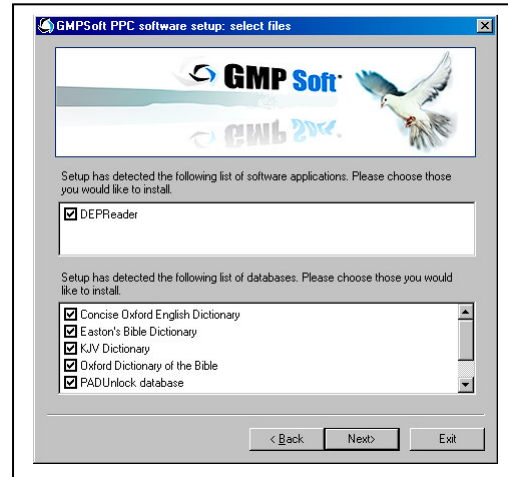
2. Install PADUnlock

- Run **SETUP**
- Select *PADUnlock database* to install
- Click on **Next** button
- Follow the rest of the instructions

Or

- Install **PADUnlock** database manually in any **GMPSOFT** folder created by **Setup** program in the device's RAM or on the Storage card:

**\My Documents\GMPSOFT or
\Storage Card\GMPSOFT**

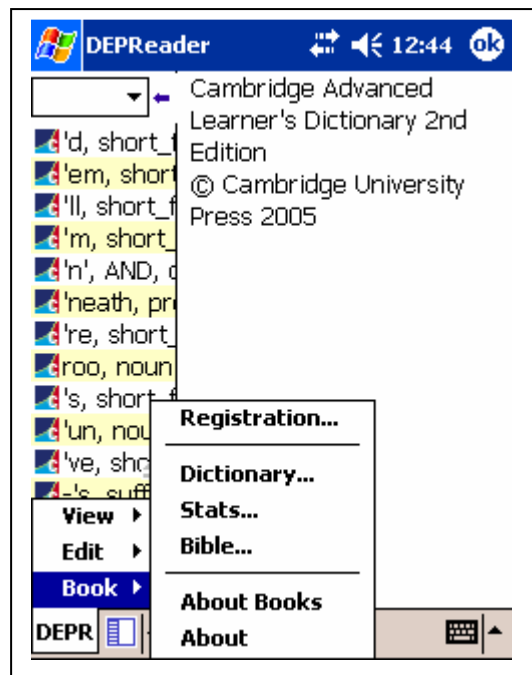


3. Go to the **Registration** form:

- Launch the product
- Tap on the *Command bar* to display the form menu
- Tap on **Book**
- Tap on **Registration**

Or

- Tap on **Register** button in the trial reminder form

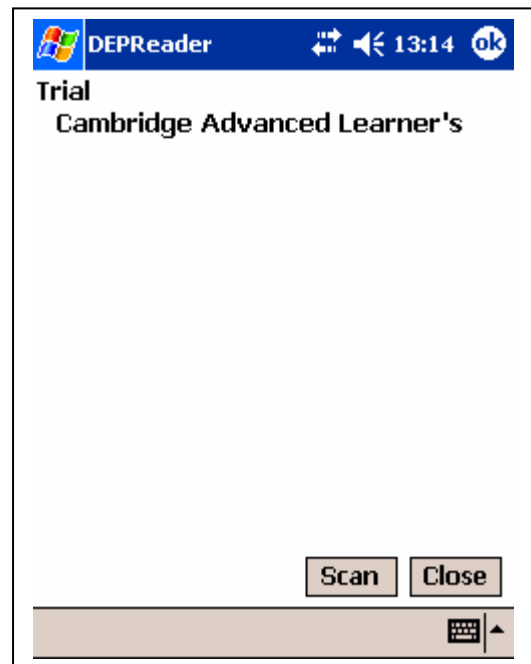


4. Apply your **PADUnlock** registration information:

- Tap on the Scan button

GMPSoft products support **PADUnlock** Key protocol and use it to automatically register your products.

Note: The *Trial reminder* form will still appear if there is even one product with a Trial License state.



4 Contact and support

Technical Support

For technical or software related inquiries:

E-mail: support@reftogo.com

Sales

For general, product and sales related inquiries:

E-mail: sales@reftogo.com

Sales points: www.reftogo.com

Partnership and Business Development

For partnership, B2B development or special sales inquiries:

E-mail: ceo@reftogo.com

For detailed information on products, sales and registration or technical support, check our Web site: www.reftogo.com